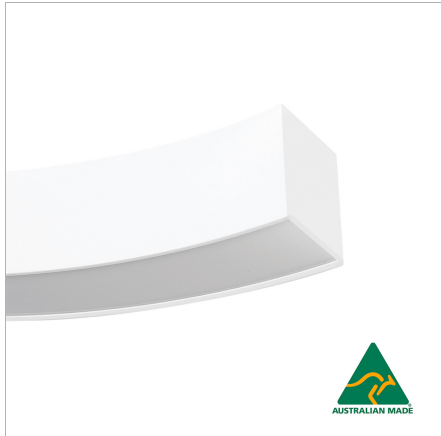


# Impact Curve 80 Surface Mounted/Suspended

LINEAR LED



Product Code  
MC80SS



## Technical Description

### Illuminate Your Creativity with Australian Made Impact Curve 80...

- Impact Curve 80 is a series of straight and curved linear modules which are combined to create endless luminaire shapes and architectural effects
- The Impact Curve 80 is produced with precision and care in Australia. Every luminaire starts with our product engineers and ends with the expert touch of our Australian fabricators
- Provides customisable curved decorative lighting options that broadens the possibilities for designers, architects and engineers to unleash their creativity
- Can be surface mounted or suspended to suit a variety of applications
- Standard Dimension 50:80 are achieved as per the Golden ratio to create aesthetically pleasing features
- Prismatic diffuser is available on request to allow greater glare control and visual comfort
- Please [contact us](#) to discuss your customised requirements

## Electrical Specifications

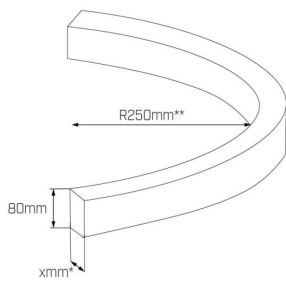
System Power	30W
Input Voltage	240V
Control Type	ON/OFF, DALI, Casambi

## Photometric Info

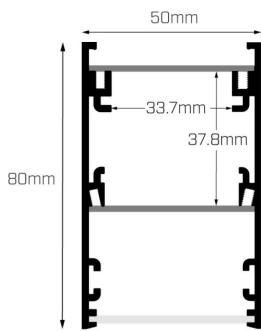
Luminaire Lumens	2160lm
CRI	CR190
CCT	3000K, 4000K
Beam Angle	100°

## Physical Characteristics

Installation Method	Surface Mounted/Suspended
Trim Finish	Silver, White, Black, Custom
IP Rating / IK Rating	IP20
Accessories	End Caps, Diffuser, Mounting Clips, Joiner Sets, Suspension Kits
Weight	1Kgs
Fitting Material	Aluminium



\*x = 50mm Standard (Range from 40mm to 140mm)  
\*\*Minimum Bend Radius



## Polar Distribution Diagrams

